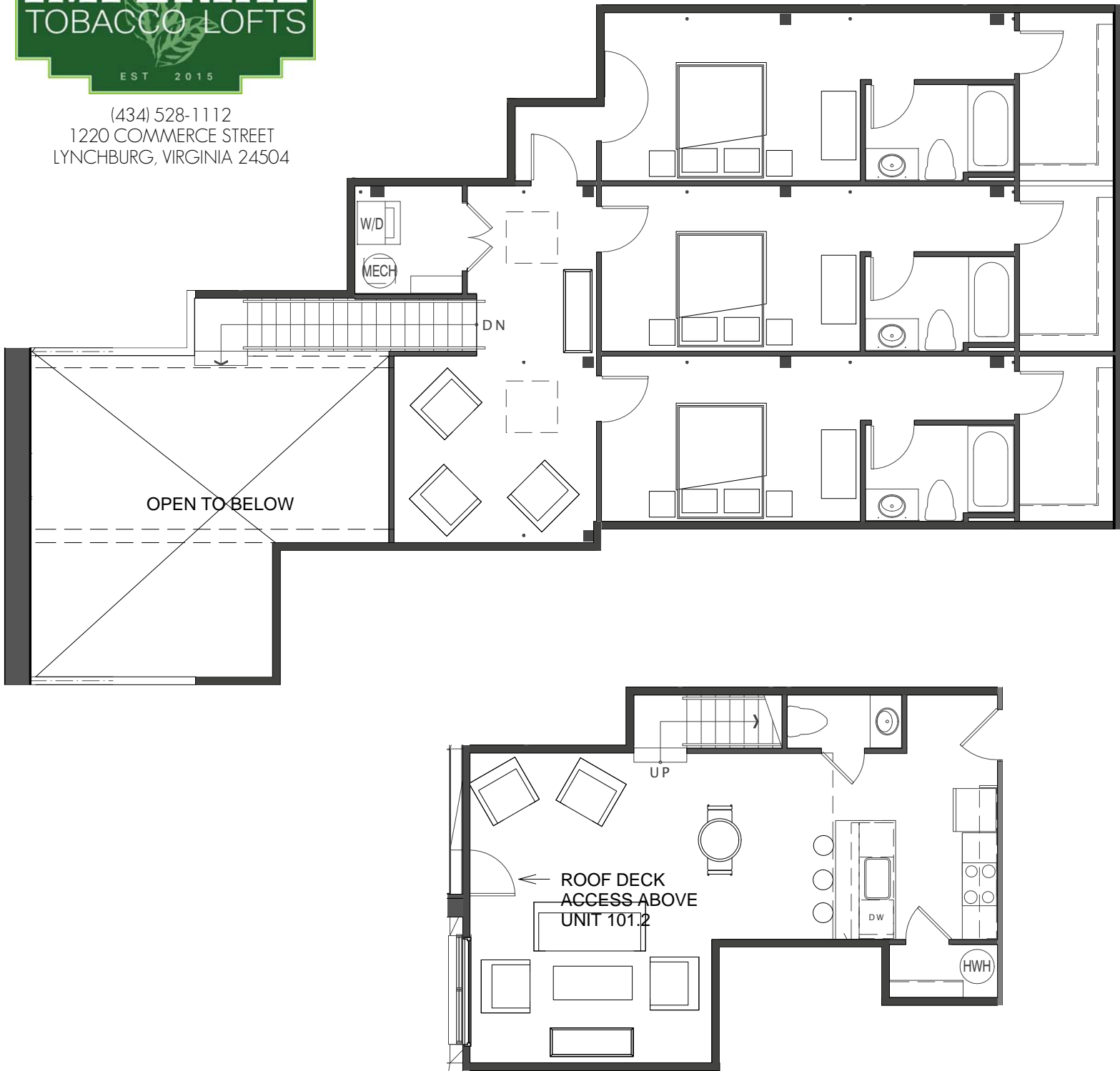




(434) 528-1112  
 1220 COMMERCE STREET  
 LYNCHBURG, VIRGINIA 24504



# UNIT 216

1738 SF 3BED 3.5BATH

1/8" = 1'-0"

- Gourmet kitchens with granite countertops designer painted maple cabinets & stainless appliances
- Washer & dryer
- Stylish hardwood and/or polished concrete flooring
- Tile flooring in bathrooms with granite countertops
- Ground Floor Units Stained Cherry Cabinets
- 1st & 2nd Floor Units Stained Maple Cabinets
- Designer selected plumbing fixtures and directional lighting
- Custom blinds
- Designer Fans
- Energy-efficient heat pump
- Low-E energy efficient storm windows
- Spiral Ductwork
- Exposed brick walls & heavy btimber beams